

(19)
(12)

(KR)
(B1)

(51) 。 Int. Cl.⁷
A61K 35/78

(45)
(11)
(24)

2003 10 11
10-0401484
2003 09 30

(21)10-2000-0032441
(22)2000 06 13

(65)
(43)

2001-0111775
2001 12 20

(73)

134

(72)

1 858109 604

10704 1102

1 117-14

(74)

:

(54)

,

2가가 .

2

,

1
260.4, 0.3, 0.2mg/mL
3(A)(B)

4 (*Areca catechu*)

5, , , ADP, ,

6	95%	(A)	50%	(B)	Sephadex LH-20
---	-----	-----	-----	-----	----------------

7

8

(Thrombus)

가

가

가

3

가

가

가

가

3

 $4\mu\text{m}$

가

(cascade)

가

(prostaglandin)

(thromboxane)

cAMP

(indomethacin)

(arachidonic acid)

(cyclooxygenase) 가

A

2

가

10

100mg

(warfarin) 2mg

가,

(prodrug)

가

(catechin),

(garlic),

(ginger),

가

(ginkgo extr

act), (ginseng)

가

Sephadex LH-20

annii) ; (*Cinnamomum burm*
 ; 가 (*Parameria laevigata*) ; (*Cinnamomum sintok*)
oodfordia floribunda) ; (*Homalomena javanica*) (*W*
 ;
 Sephadex LH-20
 (*Cinnamomum sintok*), (*Areca catechu*), (*Cinnamomum burmanni*),
 가 (*Parameria laevigata*), (*W*
oodfordia floribunda) (*Homalomena javanica*) , 가
 가

Yokjakarta 1998 2

, 4 5 S.D
 .(Sprague-Dawley rat) SPF(Specific Pathogen Free)
 22 , 55% 12 200 ± 20
 g SD 3.8% trisodium citrate (blood : anticoagul
 ant = 9 : 1) (plastic syringes)
 (human whole blood) 2 12
 anti-HIV, anti-HCV, HBs Ag A
 20 24 5

1 :
 1 80 (mesh) 100g 400mL 75%
 100%(v/v) 2 (Wha
 tman No. 2)

75%

가 20
가

2 :

3 :

4 :

5 :

6 :

7 :

1 :

aggregometer(Chronolog, modle 500, Havertown, USA)

impedance method

450 μ l (0.85% NaCl) 430 μ l

37 cuvet

te
00rpm

37

1 6
10

75%(v/v)
10 μ l(10 μ g/mL)

20 μ l

1,2

10 (dimethylsulfoxide) 가 20mg/mL 가 10%(v/v) , 20mg/mL

$$\text{항혈소판 활성(\%)} = \frac{\text{대조군의 저항값} - \text{시료의 저항값}}{\text{대조군의 저항값}} \times 100$$

$10 \mu\text{L}$ ($10 \mu\text{M}$), $13 \mu\text{L}$ (0.13 units), $20 \mu\text{L}$ (1 mM) $3 \mu\text{L}$ ($3 \mu\text{g/mL}$), ADP 10^{-5}
 1 , 20 mg/mL , 0.4 mg/mL , 50%
 $(92.04 \pm 1.25\%)$ $99.43 \pm 0.81\%$

[1]

			(%)	(%)
Jambe			13.0	99.43 ± 0.81 ^{b)}
Kayu Manis			8.0	91.21 ± 9.05
Sintok			8.0	85.44 ± 8.00
Nampu			8.0	66.09 ± 13.19
Kayu Rapat	가		11.3	80.80 ± 8.32
Sidowayah			25.5	85.02 ± 8.59
	92.04 ± 1.25			
[] a) :				

2 :

1×6 6 , 1 ,

가 $0.4, 0.3, 0.2 \text{ mg/mL}$ 가

2 , 가

가 $95.00, 77.50$ 62.50% ,
 가 ,

6 , 100% 98.75%

2

가 (3). positive control 가 0.2 0.4 mg/mL 80 1
 00% 0.100 0.166 mg/mL , positive control 0.196 mg/mL 1.800 mg/mL IC_{50}
 IC_{50} (3). $IC_{50} = 1.3 \text{ mg/mL}$ 0.1 mg/mL (0.
 196 mg/mL 2 , (1.8 mg/mL) 18

[2]

	(%)		
	16.67	77.50	100.00
	48.89	95.00	98.75

	IC ₅₀ (mg/mL)
	0.100
	0.166
	0.270
	0.200
가	0.280
	0.290
	0.196
	1.800

	(%)	(%)	
	58.80	6.760	0.115

	79.86	7.171	0.090
	39.20	1.750	0.045
	12.74	0.658	0.052
가	25.58	2.127	0.083
	4.68	0.841	0.180

4 :

1 3 1 6

100% 0.1mg/mL IC₅₀

1 (75 100%)

ADP 10 μ l(10 μ M) 3 μ l(3 μ g/mL), 1

3 μ l(0.13units/mL), 20 μ l(1mM)

5 , 75% 100% 60%

, 100% 75%

4 가 ,

5 80% , ADP, 0.1mg/mL positive control agonist

ADP 40% 40% 100% 가 , ADP

2 3가 agonist 가

가 0.1mg/mL 0%, 0.4mg/mL ADP 40%, 50%

, ADP 0.121, 0.065, 0.063, 0.062mg/mL (6). IC₅₀

IC₅₀

[5]

75% 100%		
	75%	100%
(%)	56	54
(%)	12	9
(%)	97	80.6

[6]

	IC ₅₀			
	IC ₅₀ (mg/mL)			
				ADP
	0.121	0.065	0.063	0.062
	0.370	>0.400	0.198	0.176

	>0.400	0.360	0.260	0.160
	0.290	>0.400	0.210	0.245

5 : Sephadex LH-20 chromatography

hy umn loading 3g 50% 10mL UV 95% (280nm)가 1 sephadex LH-20 chromatograp Sephadex LH-20(15x4.5cm) col 50% 420nm 3 4

Sephadex LH-20 gel chromatography

95% (6) 6 , Fr. (27.14%) Fr. (68
50% 3 , Fr. -A(75.96%), Fr. -A(62
.05%), .12%), Fr. -A(93.50%) , Fr.III-A 가 (7).
(99.42 ± 0.811%)

[7]

95%	50%	Sephadex LH-20	
Elution	Fraction No.		(%)
95%	Fr.	1 30	-22.4
	Fr.	31 47	27.14
	Fr.	48 55	0.00
	Fr.	56 77	-56.65
	Fr.	78 105	-14.75
	Fr.	106 170	68.05
50%	Fr. -A	1 10	75.96
	Fr. -A	11 37	62.12
	Fr. -A	38 70	93.50

6 :

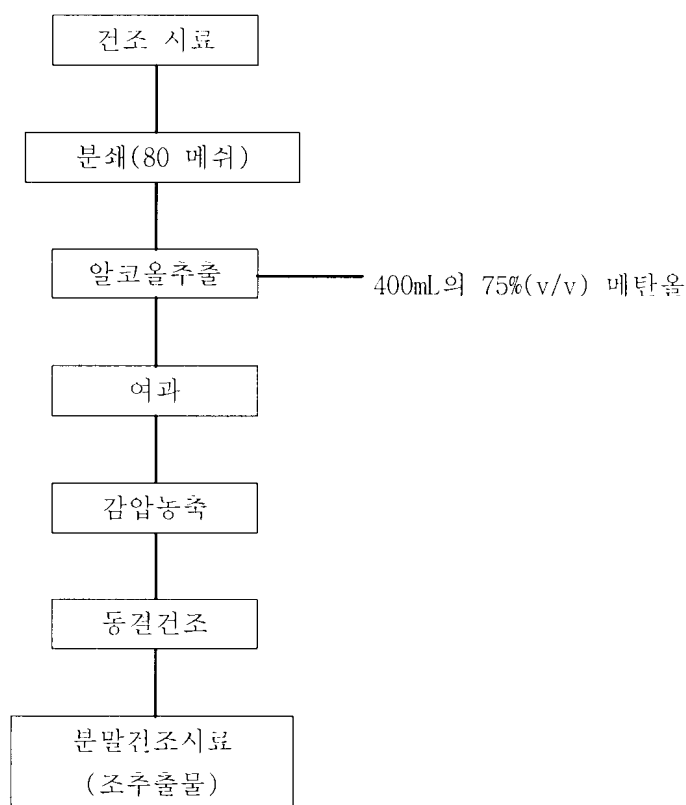
platelet rich plasma) 1mL 20μℓ 가 37 (cyclooxygenase) 10 , PRP(
10 0.6M HCl 20%(w/v) agonist 가
tic acid) 1mL 0.1M NaOH 0.1M (thiobarbituric acid) 1mL (trichloroace
75 20 20 3,000rpm(1,500 ×g) 5
535nm PPP(platelet poor plasma) PRP
, PPP PRP 10,000 ×g 3
10μg/μℓ 10 30
7 , 5, 10, 15, 20μg/mL 24.05, 51.51, 67.4, 80
.49%
85% , 10μg/mL
(8) 가 5% 가
10 30 40% 가 30

가

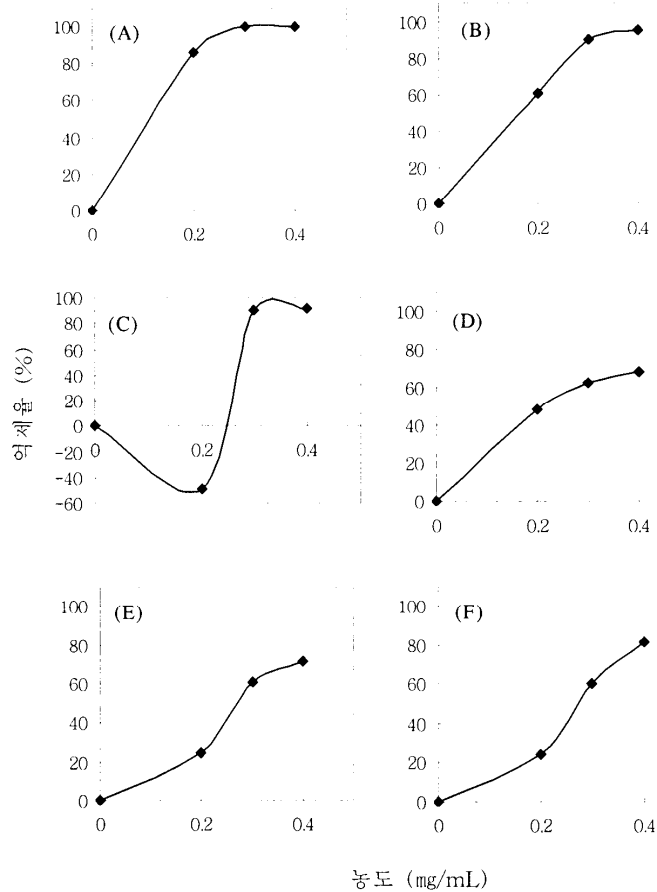
(57)

1. (*Areca catechu*), (*Cinnamomum burmanni*), (*Cinnamomum si*
ntok), 가 (*Parameria laevigata*), (*Woodfordia floribunda*)
(*Homalomena javanica*)
- 2 2
- 2.
- 3.

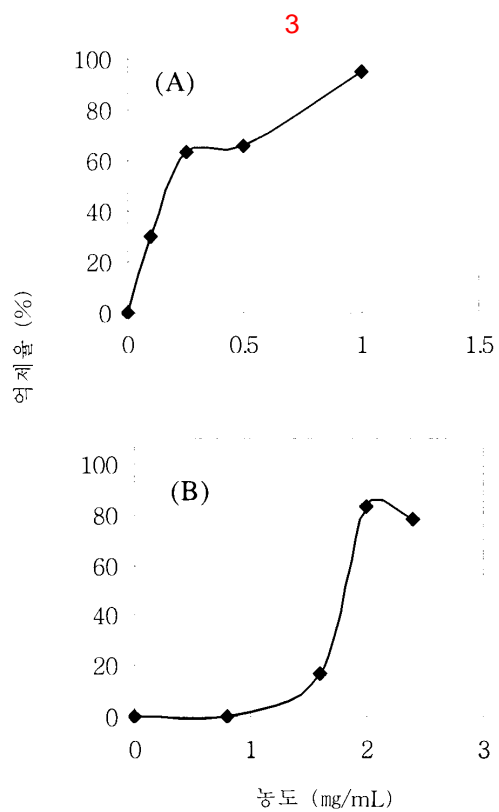
1



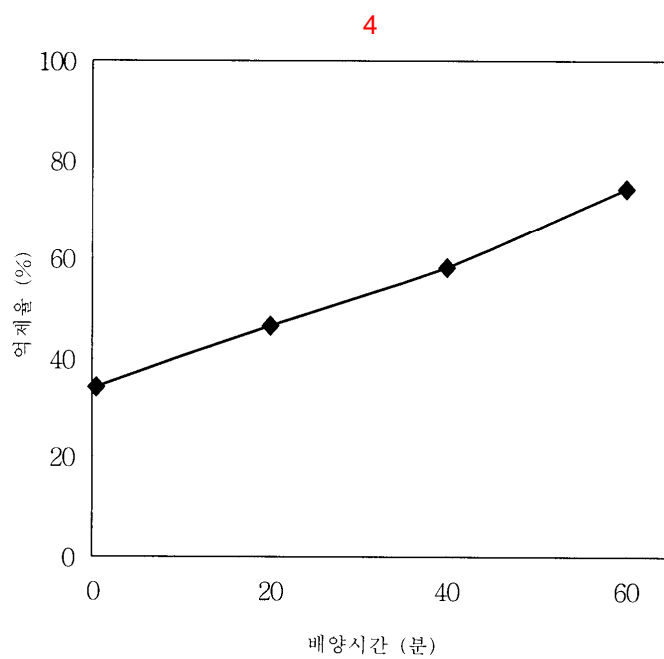
2



[보기] (A) : *A. catechu*, (B) : *C. burmanni*, (C) : *C. sintok*,
 (D) : *H. javanica*, (E) : *P. laevigata*, (F) : *W. floribunda*

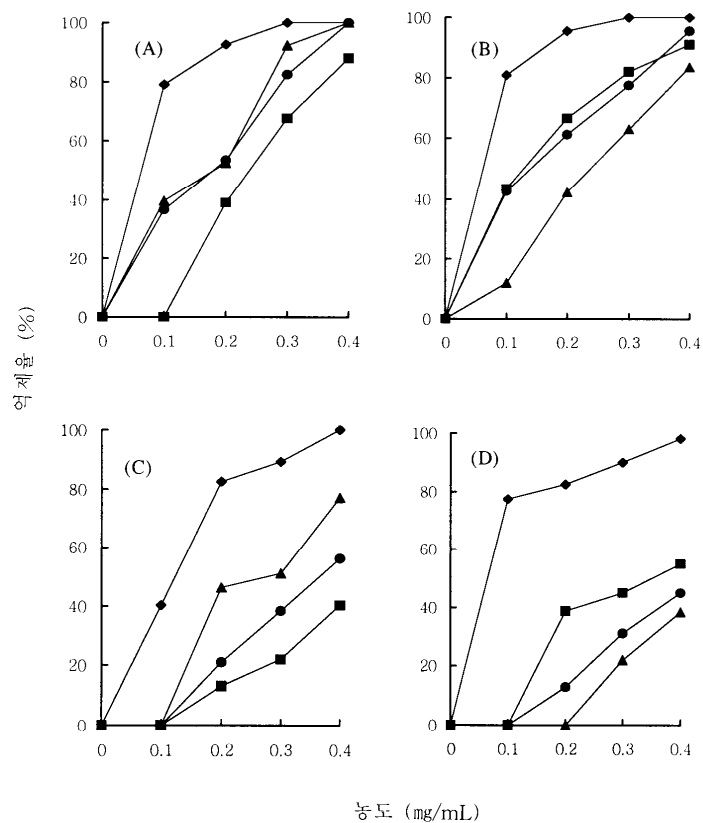


[보기] (A) : 아스피린, (B) : 카테킨



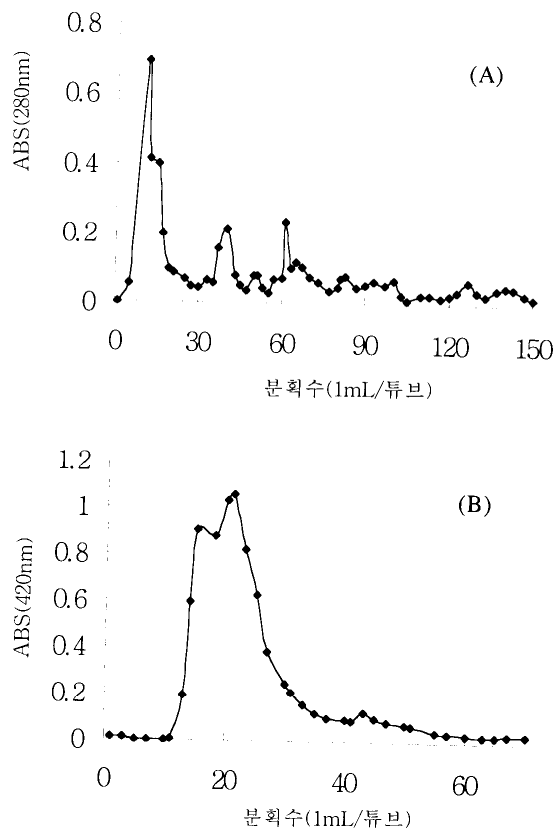
[보기] *A. catechu*의 농도는 0.1mg/mL.

5



[보기] (A) : 아라키돈산 (1mM), (B) : ADP (10 μ M),
 (C) : 콜라겐 (3 μ g/mL), (D) : 트롬빈 (0.13units/mL)
 ◆ : *A. catechu*, ■ : 카테킨, ▲ : 녹차추출물, ● : 아스피린

6



[보기] (A) : 95% 에탄올, (B) : 50% 아세톤

