

(19)
(12)

(KR)
(A)

(51) 。 Int. Cl.⁷
H01F 37/00

(11)
(43)

10-2004-0108474
2004 12 24

(21) 10-2003-0039074
(22) 2003 06 17

(71) 134

(72) 303 303

2 104-1902

102-301

4-15

206 1104

(74)

•

•

(54)

(DC Reactor)

가, (transpose), , (joint)

가 가 가 가
가 . 가 .

가 가 , 가 ,

가 가 .

(57)

1. (DC Reactor) , 가

2. 1 , .

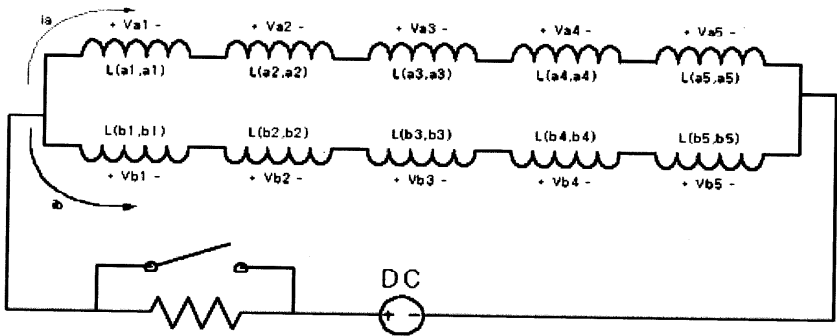
3. 1 , .

4. 1 , .

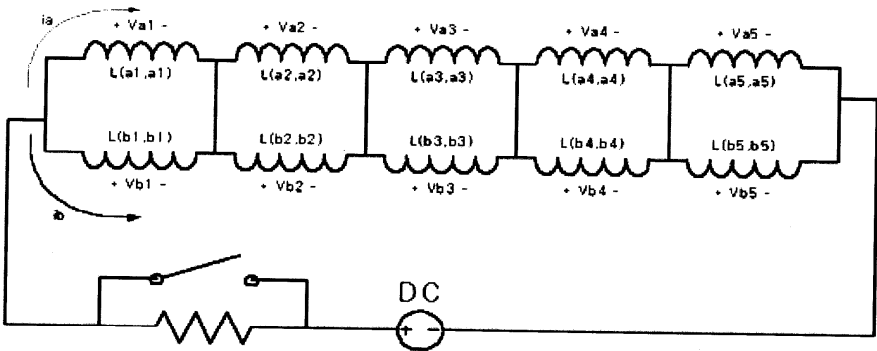
5. 1 , .

(joint) .

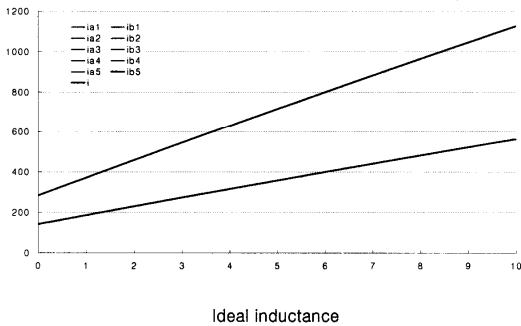
1



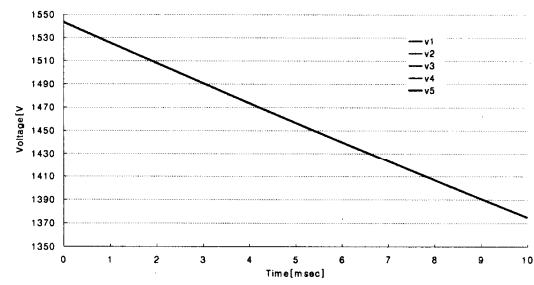
2



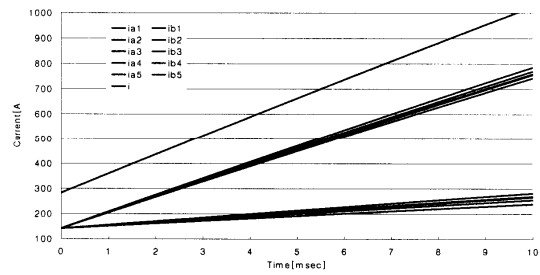
3



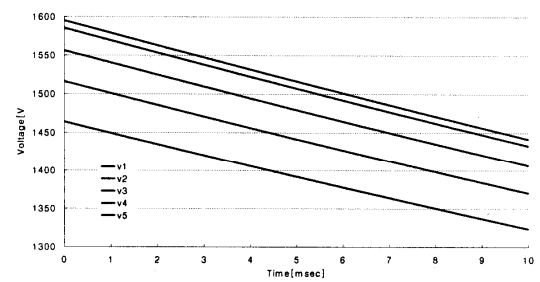
4



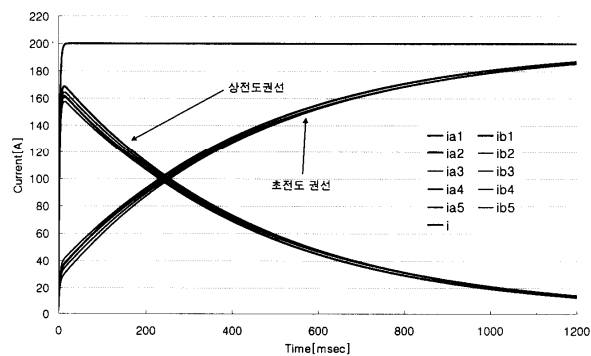
5



6



7



8

