

(19)  
(12)(KR)  
(A)(51) 。 Int. Cl. <sup>7</sup>  
A61B 5/103(11)  
(43)2002 - 0020303  
2002 03 15(21) 10 - 2000 - 0053388  
(22) 2000 09 08

(71) ( )

16 - 8

16 - 8

(72) 16 - 8

2 316 10 - 1008

(74)

:

(54)

( )  
/

2

,

가 . ,

( ) (PC)

. ,

.

2

/ (A/D) ; A/D

;

,

;

; DC

;

.

1

, , , , , PC, , ,

1

.

2

.

3

,

3a

,

3b

.

4

,

4a

가 가

,

4b

.

5a,b

.

6a,b

.

<

>

10 : 12 :

14 : A/D 20, 150 :

22 : DC 24 :

30 : 40 :

50 : PC52 :

54 : 100 :

LS : RS :

가 ( ) 2  
/ ,  
.  
가  
( ) (PC)  
.  
가  
가 ( )  
가  
가 ,  
가 .  
가  
7 - (segment)  
/  
가,  
( ) 2  
/ ,

가

PC

2

(A/D)

A/D

/

(bar)

(c

asing)  
RS232

가

가

PC

1 , 2 , 3a , 3b , 4 , 4a 가 가 , 4b , 5a,b , 6a,b .

, 1 4 , 2 (LS) , (RS) , (LS)(RS) (12) , (12) (14), A/D (14) PC(50) / (A/D) (30) , (50) 6 , (54) , (52) PC(50) , PC(50) (14)(30)(40)(50) (60) (12) A/D (14) (10) .

(42) (30) PC(50) 가 RS232 (20) (40) , (20) (bar)(152) DC (22) , DC (22) (24) (152) (26) (154)(156) (40) (30) PC(50) , MAX232 .

3 4 (LS)(RS) (casing) (80) , (80) ( ; 220 ) (82) , (40) RS232 (42) (84), (80) (90)가 (80) (90) (80) (95)가 .

PC(50) , PC(50)가 , (54) (52) (100) PC(50) (57), CD .

5a , PC(50) (100) (100)  
 PC(50) . PC(50) 6  
 , PC(50)  
 , (LS)(RS) ( ) (100) 가 가 2  
 (12) (balance)가 (12)  
 A/D (14) , P  
 C(50) . PC(50) (30) PC(50) (40) 6  
 CD(57) (52) (54) (54) (100)  
 (52) (54)

$$\text{균형정도}(\%) = (\text{표준편차} \div \text{체중}) \times 100$$

5b , (100) (150)가 가 , (10)  
 (150) 5a  
 4b (150) (152) DC (22) , (152) DC (22)  
 (152)가 DC (22) (154)(156)  
 (26)가 (30) (30) (26)가 (154)(15)  
 6) 가 (30) , (30) (154)(156)

PC

, ( ) 2  
 / ,

가

PC

(57)

1.

2

A/D

/ (A/D)

2.

1 , 가 RS232

3.

1 , (bar)

4.

1 3 (casing)

가 , RS232 .

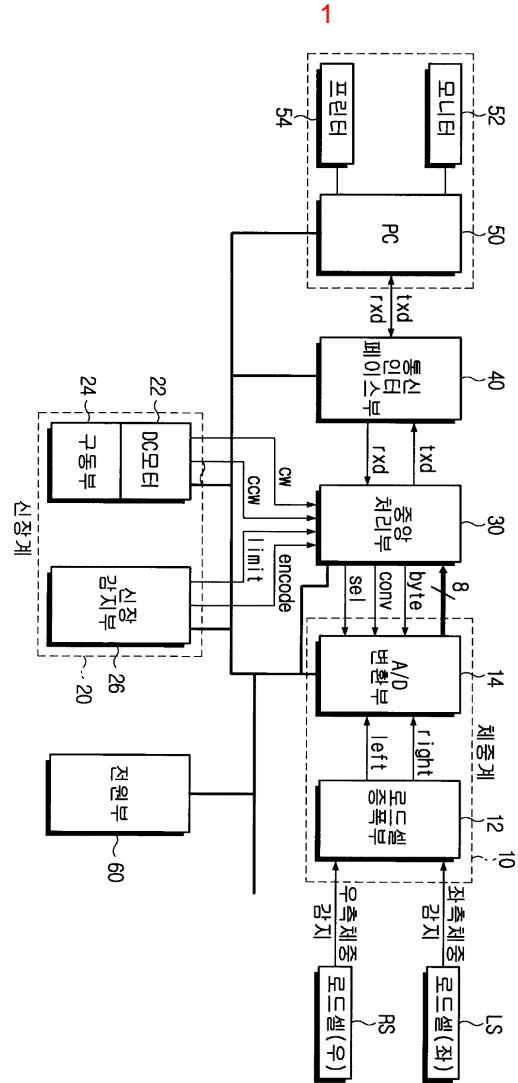
5.

4 , .

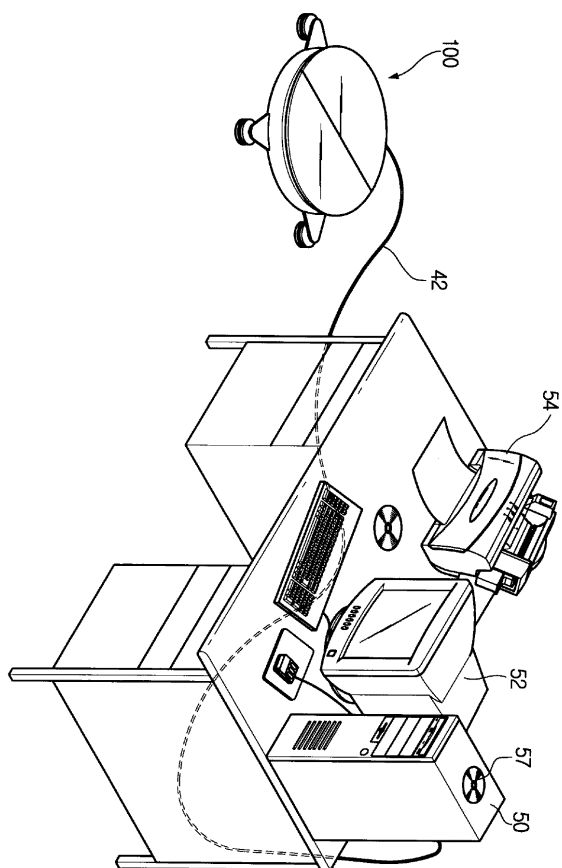
6.

1 3 , 가 , .

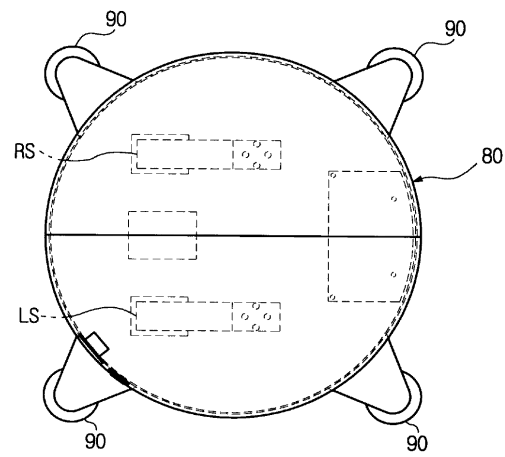




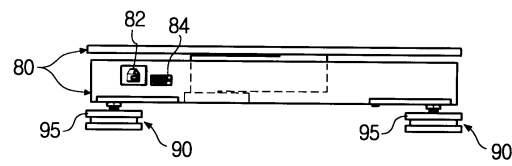
2

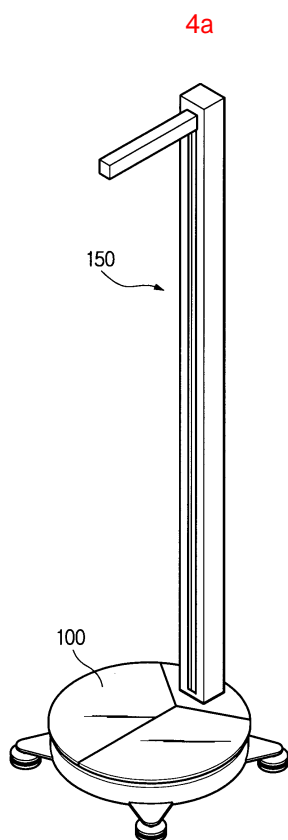


3a

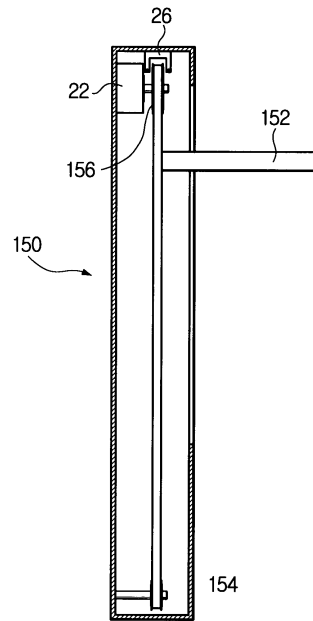


3b

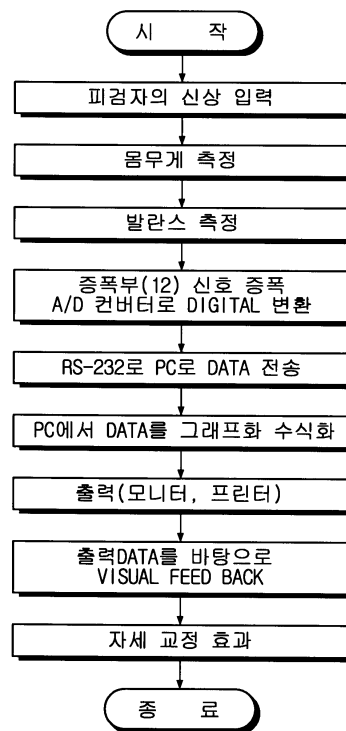




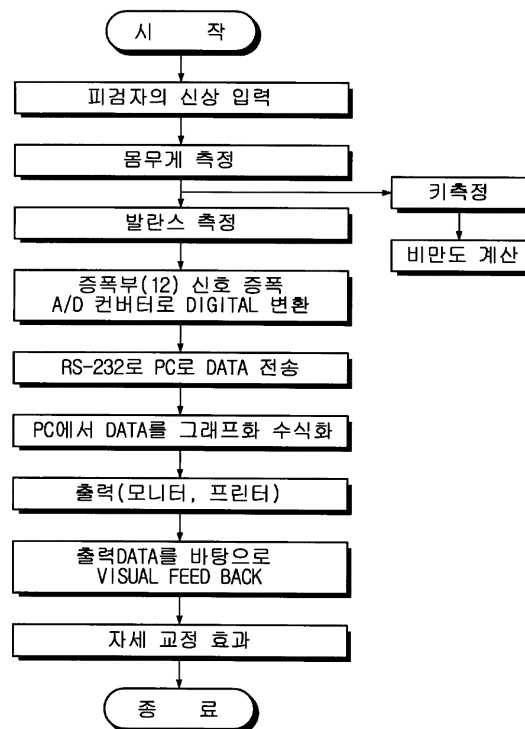
4b



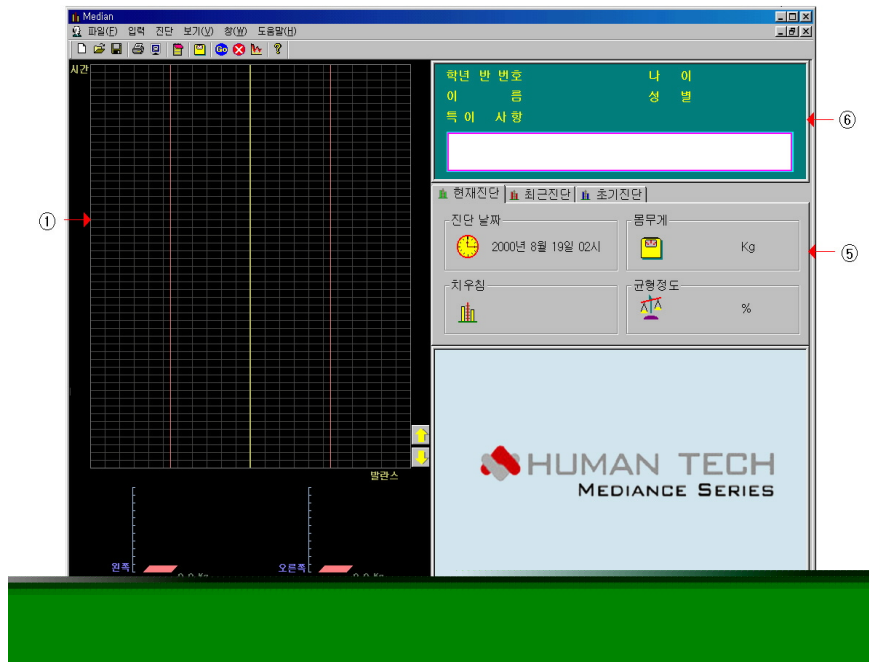
5a



5b



6a



6b

