

(19)
(12)

(KR)
(A)

(51) 。 Int. Cl. ⁷
A61K 35/78

(11)
(43)

2001 - 0111775
2001 12 20

(21)
(22)

10 - 2000 - 0032441
2000 06 13

(71)

1 858109 604

(72)

1 858109 604

10704 1102

1 117 - 14

(74)

:

(54)

2가가 .

2

， ， ，

1 .

2 6 0.4, 0.3, 0.2mg/mL

3 (A) (B)

4 (Areca catechu)

5 , , , ADP, ,

6 95% (A) 50% (B) Sephadex LH - 20

7

8

(Thrombus) , 가

가 가 가 가 3

4 μ m 가 3

(cascade) ,

가

(prostaglandin) (thromboxane)
cAMP (indomethacin)
(arachidonic acid)
(cyclooxygenase) 가 A₂
가
100mg 가 10 (warfarin) 2mg
가,
(prodrug)
가 (catechin), (garlic), (ginger), 가 (ginkgo extr
act), (ginseng)
Sephadex LH - 20
ni) ; (Cinnamomum burman
가 (Parameria laevigata) (Cinnamomum sintok) ;
ia floribunda) ; (Homalomena javanica) (Woodford
adex LH - 20 Seph

(*Cinnamomum sintok*), (Areca catechu), (Cinnamomum burmanni),
 rdia floribunda) 가 (Parameria laevigata), (Woodfo
 (Homalomena javanica) 가 가

Yokjakarta 1998 2

, 4 5 S.D.

(Sprague - Dawley rat) SPF(Specific Pathogen Free) 200 ± 20

22 , 55% 12 3.8% trisodium citrate (blood : anticoagu

g SD (plastic syringes)

lant = 9 : 1) (human whole blood) 2 12 , , A

anti - HIV, anti - HCV, HBs Ag 20 24 , 5

가

1 :

1 80 (mesh) 100g 400mL 75%
 100%(v/v) 2 , (Wh
 atman No. 2)

75% 가 20
 가

2 :

3 :

4 :

5 : 가

가

6 :

7 :

1 :

aggregometer(Chronolog, modle 500, Havertown, USA) impedance method
 450 μ l (0.85% NaCl) 430 μ l 37 cuve
 tte 1 6 75%(v/v) 20 μ l 1,
 200rpm 37 10 10 μ l (10 μ g/mL)
 10 20mg/mL 가 10%(v/v)
 (dimethylsulfoxide) 20mg/mL
 가
 (%)

$$\text{항혈소판 활성(\%)} = \frac{\text{대조군의 저항값} - \text{시료의 저항값}}{\text{대조군의 저항값}} \times 100$$

μ l (10 μ M), 13 μ l (0.13units), 20 μ l (1mM) 3 μ l (3 μ g/mL), ADP 10
 20mg/Ml 5
 1 0.4mg/mL 50%
 99.43 \pm 0.81%
 (92.04 \pm 1.25%)

			(%)	(%)
Jambe			13.0	99.43 ± 0.81 ^{b)}
Kayu Manis			8.0	91.21 ± 9.05
Sintok			8.0	85.44 ± 8.00
Nampu			8.0	66.09 ± 13.19
Kayu Rapat	가		11.3	80.80 ± 8.32
Sidowayah			25.5	85.02 ± 8.59
	92.04 ± 1.25			
[] a) : 400µg/mL.				

2 :

1 6 6
 1
 가 0.4, 0.3, 0.2mg/mL가

2 , 가
 95.00, 77.50 62.50% 6 100% 98.75%
 가

2 , positive control
 가 (3). 가 0.2 0.4mg/mL 80 1
 00% IC₅₀ 0.
 100 0.166mg/mL , positive control 0.196mg/mL 1.800mg/mL
 IC₅₀ (3). IC₅₀ = 1.3mg/mL
 0.1mg/mL (0.196mg/
 mL) 2 , (1.8mg/mL) 18

	(%)		
	16.67	77.50	100.00
	48.89	95.00	98.75
	0.00	62.50	97.50
	0.00	- 2.33	62.79
가	45.45	19.61	62.75
	14.55	- 48.04	78.43
	93.48		

IC

	IC ₅₀ (mg/mL)
	0.100
	0.166
	0.270
	0.200
가	0.280
	0.290
	0.196
	1.800

3 :

1 6 75% TLC (Kiesel - gel 60 F₂₅₄ , Merc
 k, Sweden)
 : : = 1:7:1 1:1:1(v/v)
 , 10% H₂SO₄ (anisaldehyde) FeCl₃
 FeCl₃
 FeCl₃ 가

L 가 0.2g 10mL , 100 0.2mL 2% Na₂CO₃ 2m
 750nm . 50% Folin - Ciocalteu 0.2mL 가 30 ,

nillin(50:50 mixture of 1% vanillin/8% HCl in methanol) 5mL 가 , 30 20 1mL va
 500nm .

flavan , 6가 FeCl₃ flavan spotting
 TLC R_f dimeric .

4

가 , Flavanol vanillin , V/FC 가
 가 , ,

	(%)	(%)	
	58.80	6.760	0.115
	79.86	7.171	0.090
	39.20	1.750	0.045
	12.74	0.658	0.052
가	25.58	2.127	0.083
	4.68	0.841	0.180

4 :

1 3 1 6
 100% 0.1mg/mL IC₅₀

1 (75 100%)
 13μℓ(0.13units/mL), 20μℓ(1mM) ADP 10μℓ(10 μ M) 3μℓ(3μg/mL),

5 , 75% 100% 60%
 , 100% 75%

4

가

5 , ADP, 0.1mg/mL
 80% , 40% positive control
 ADP 40% agonist
 0.4mg/mL 100% 가
 ADP , ADP
 2 3가 agonist
 가 가
 0.1mg/mL 0%, 0.4mg/mL ADP
 40%, 50%
 IC₅₀ , , , ADP
 0.121, 0.065, 0.063, 0.062mg/mL (6). IC₅₀
 2

75% 100%

	75%	100%
(%)	56	54
(%)	12	9
(%)	97	80.6

IC

	IC ₅₀ (mg/mL)			
				ADP
	0.121	0.065	0.063	0.062
	0.370	> 0.400	0.198	0.176
	> 0.400	0.360	0.260	0.160
	0.290	> 0.400	0.210	0.245

5 : Sephadex LH - 20 chromatography

1 sephadex LH - 20 chromatograph
 y . 3g 50% 10mL 95% Sephadex LH - 20(15x4.5cm) co
 lumn loading . 95% UV (280nm)가
 50% 420nm

3 4

Sephadex LH - 20 gel chromatography

95% (6) 6 , Fr. (27.14%) Fr. (
 68.05%) 50% 3 , Fr. - A(75.96%), Fr. -
 A(62.12%), Fr. - A(93.50%) , Fr.III - A 가
 (7). (99.42 ± 0.811%)

95%	50%	Sephadex LH - 20	
Elution	Fraction No.		(%)
95%	Fr.	1 30	- 22.4
	Fr.	31 47	27.14
	Fr.	48 55	0.00
	Fr.	56 77	- 56.65
	Fr.	78 105	- 14.75
	Fr.	106 170	68.05
50%	Fr. - A	1 10	75.96
	Fr. - A	11 37	62.12
	Fr. - A	38 70	93.50

6 :

1 (cyclooxygenase) , PRP(p
 latelet rich plasma) 1mL 20 μ l 가 37 10 . agonist 가
 10 0.6M HCl 20%(w/v)
 c acid) 1mL 0.1M NaOH 0.1M (thiobarbituric acid) 1mL
 75 20 20 3,000rpm(1,500 \times g) 5
 535nm . PPP(platelet poor plasma) PRP
 , PPP PRP 10,000 \times g 3
 10 μ g/ μ l 10 30 .

7 , 5, 10, 15, 20 μ g/mL 24.05, 51.51, 67.4, 8
 0.49% .
 85% , 10 μ g/mL
 (8) 가 5% 가
 10 30 40% 가 30 .

가 , , 2 가

(57)

1.

2

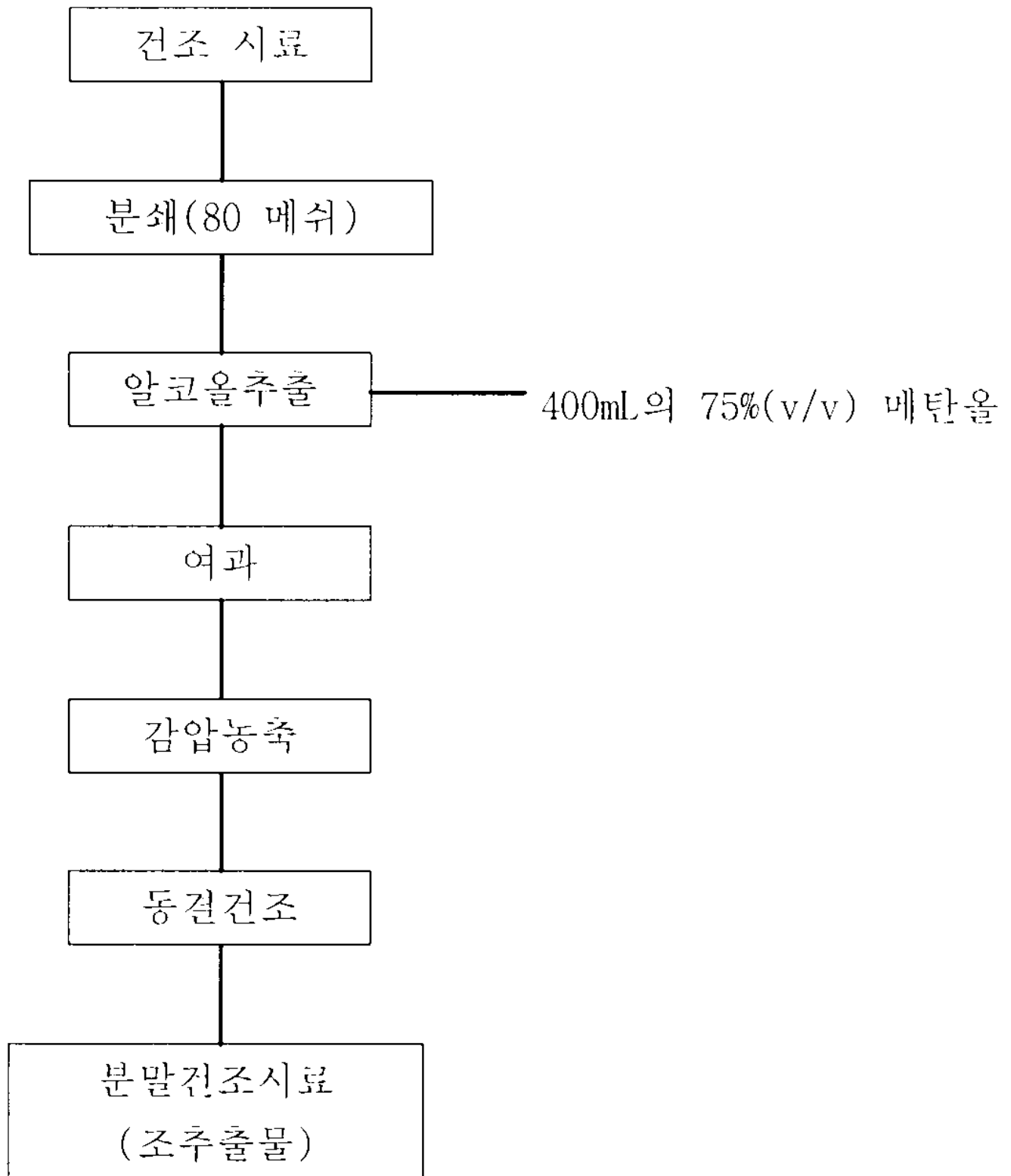
2

2.

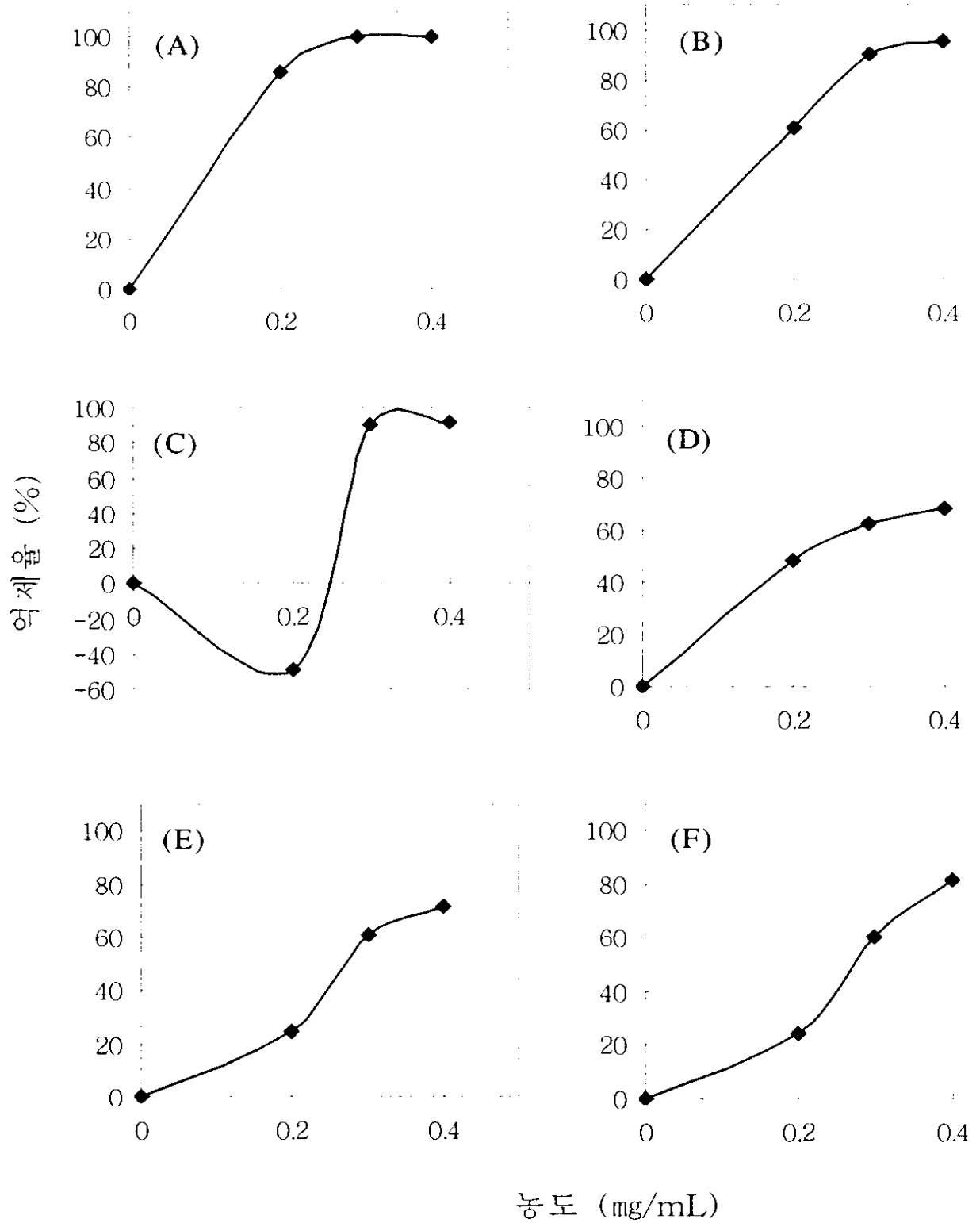
1 , (Areca catechu), (Cinnamomum burmann
 i), (Cinnamomum sintok), 가 (Parameria laevigata), (
 Woodfordia floribunda) (Homalomena javanica)

3.

1

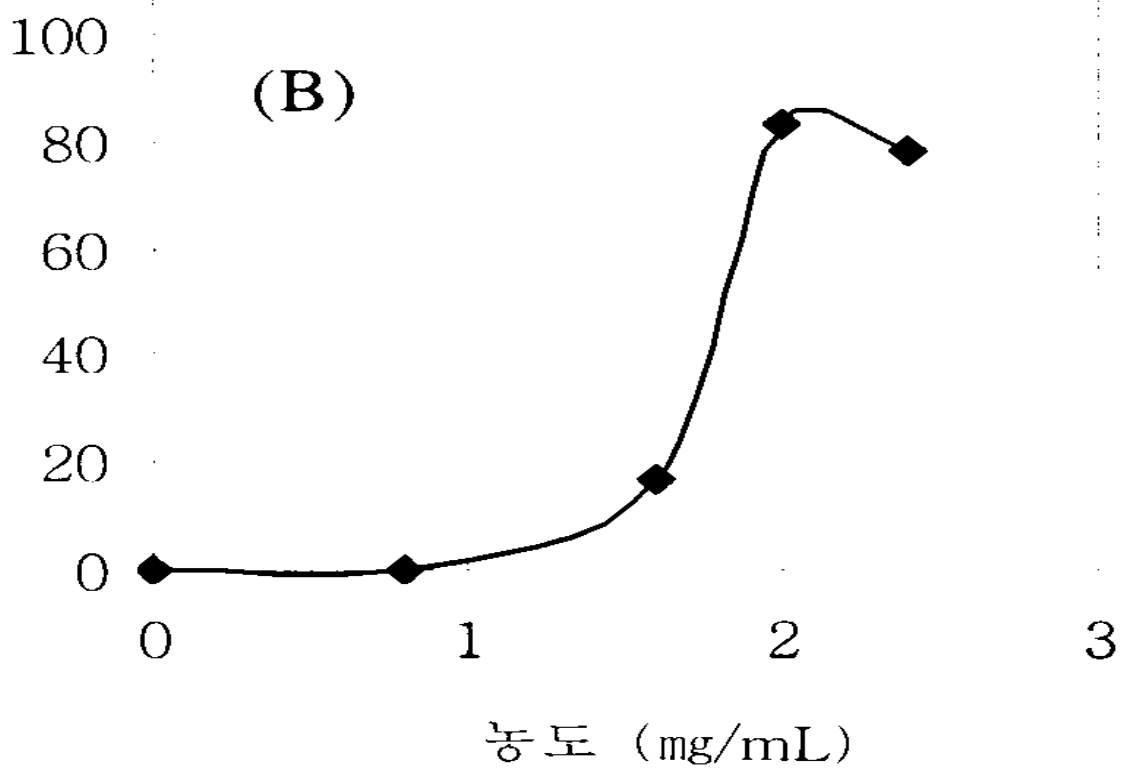
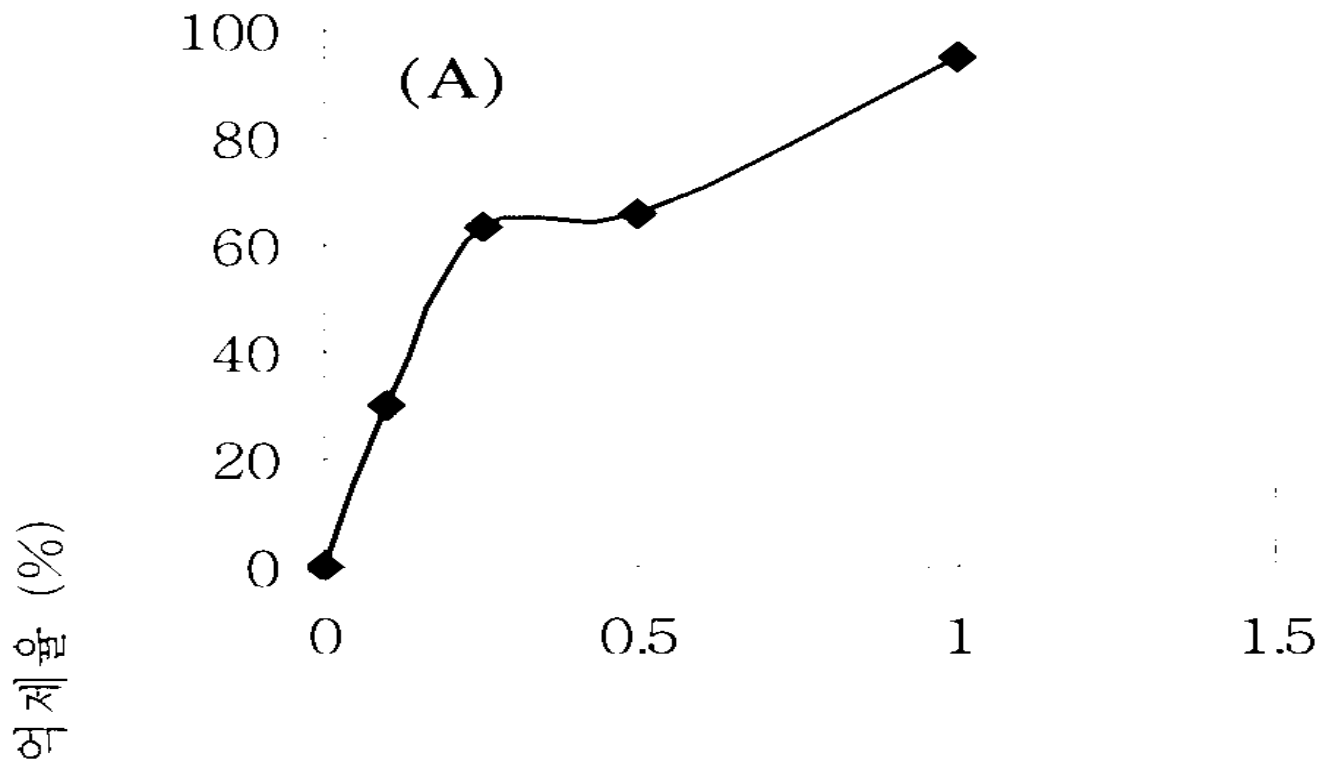


2



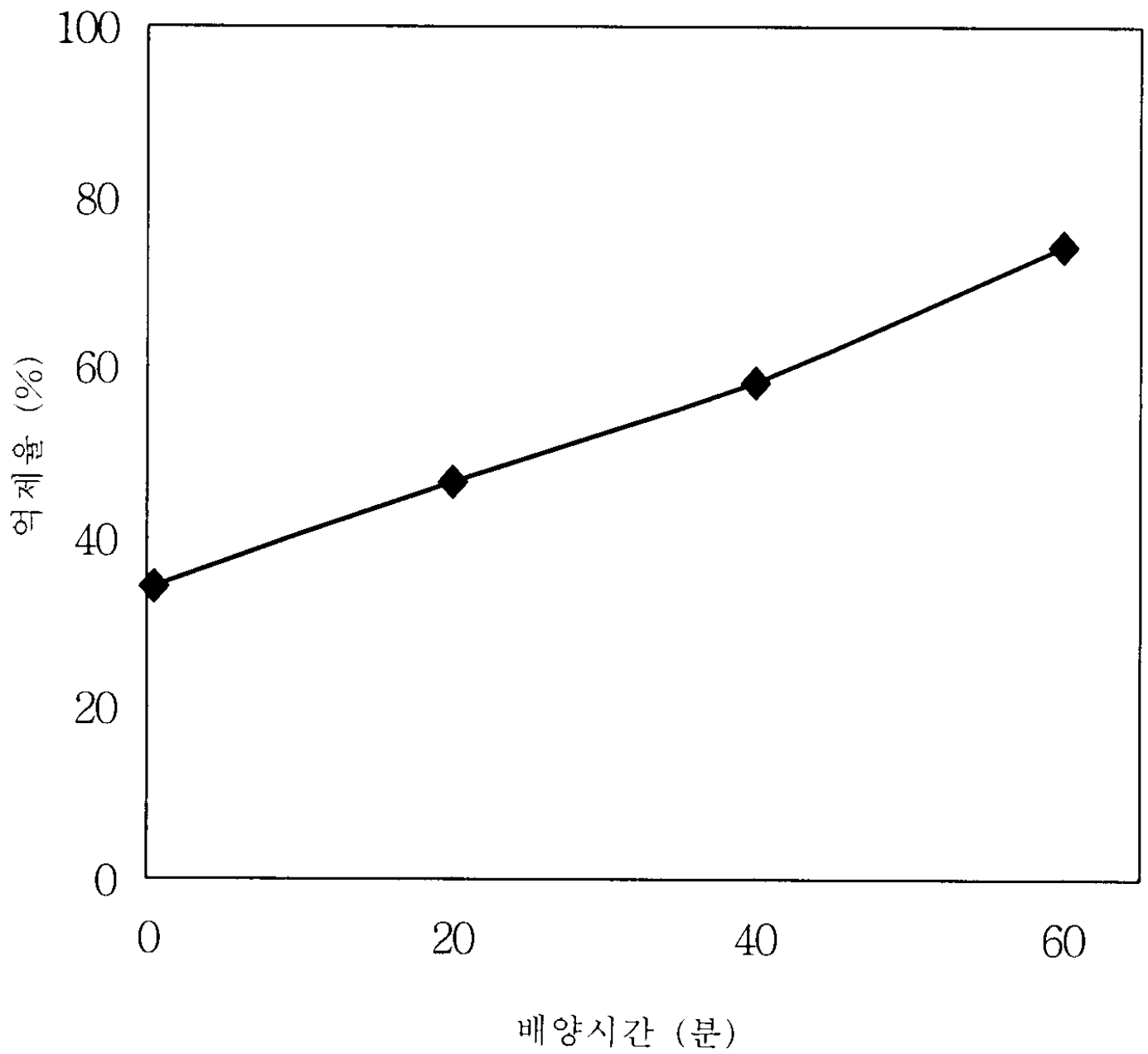
[보기] (A) : *A. catechu*, (B) : *C. burmanni*, (C) : *C. sintok*,
 (D) : *H. javanica*, (E) : *P. laevigata*, (F) : *W. floribunda*

3



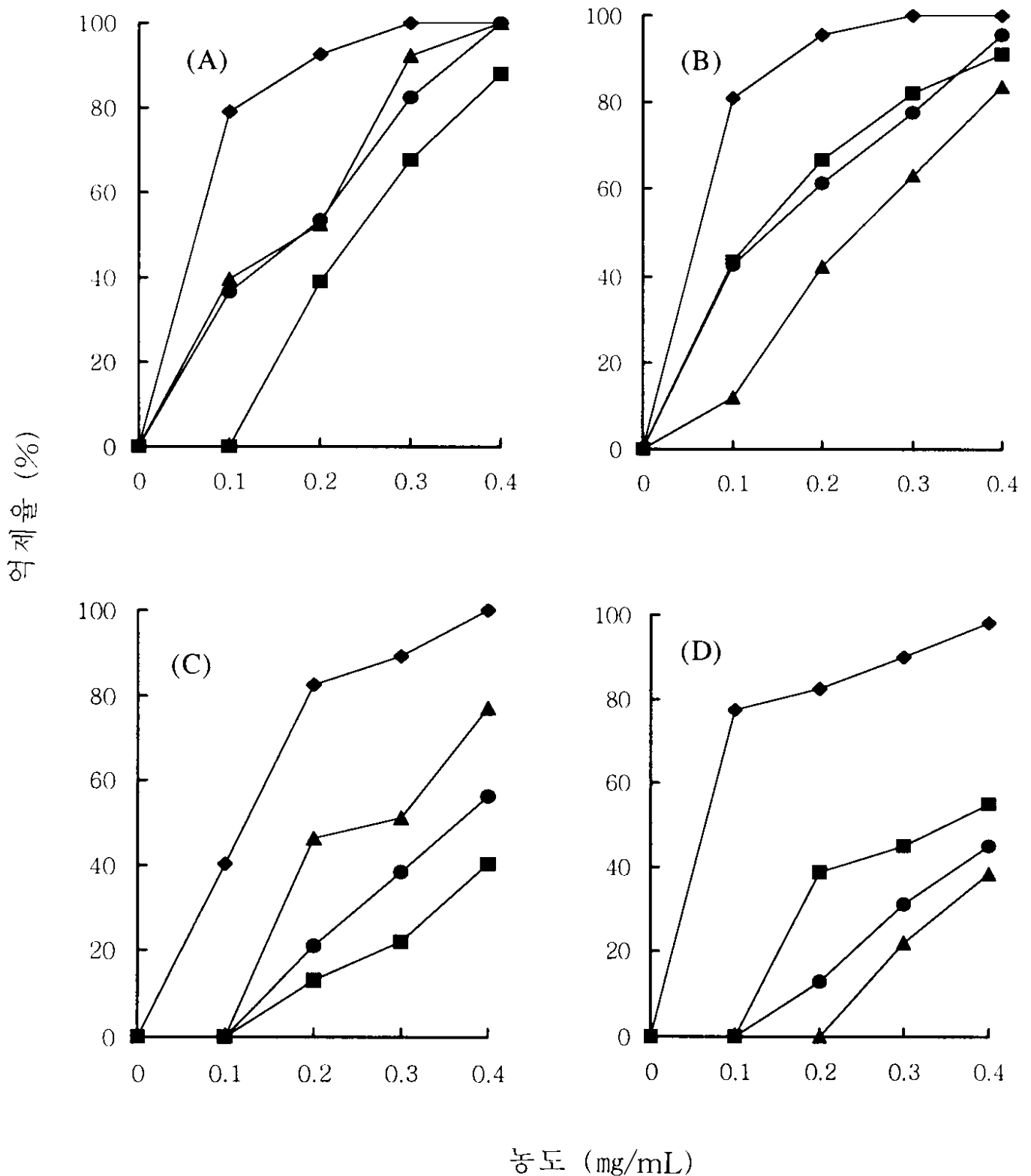
[보기] (A) : 아스피린, (B) : 카테킨

4



[보기] *A. catechu*의 농도는 0.1mg/mL.

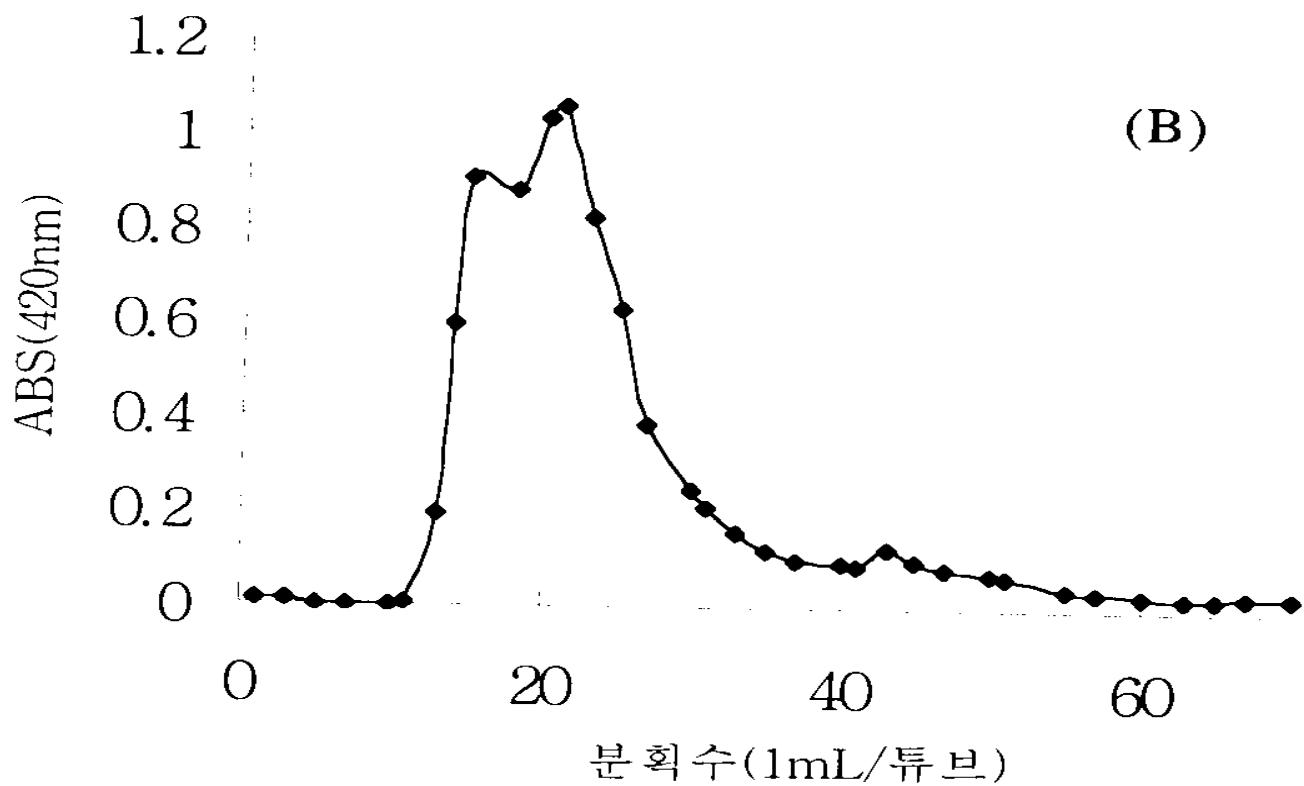
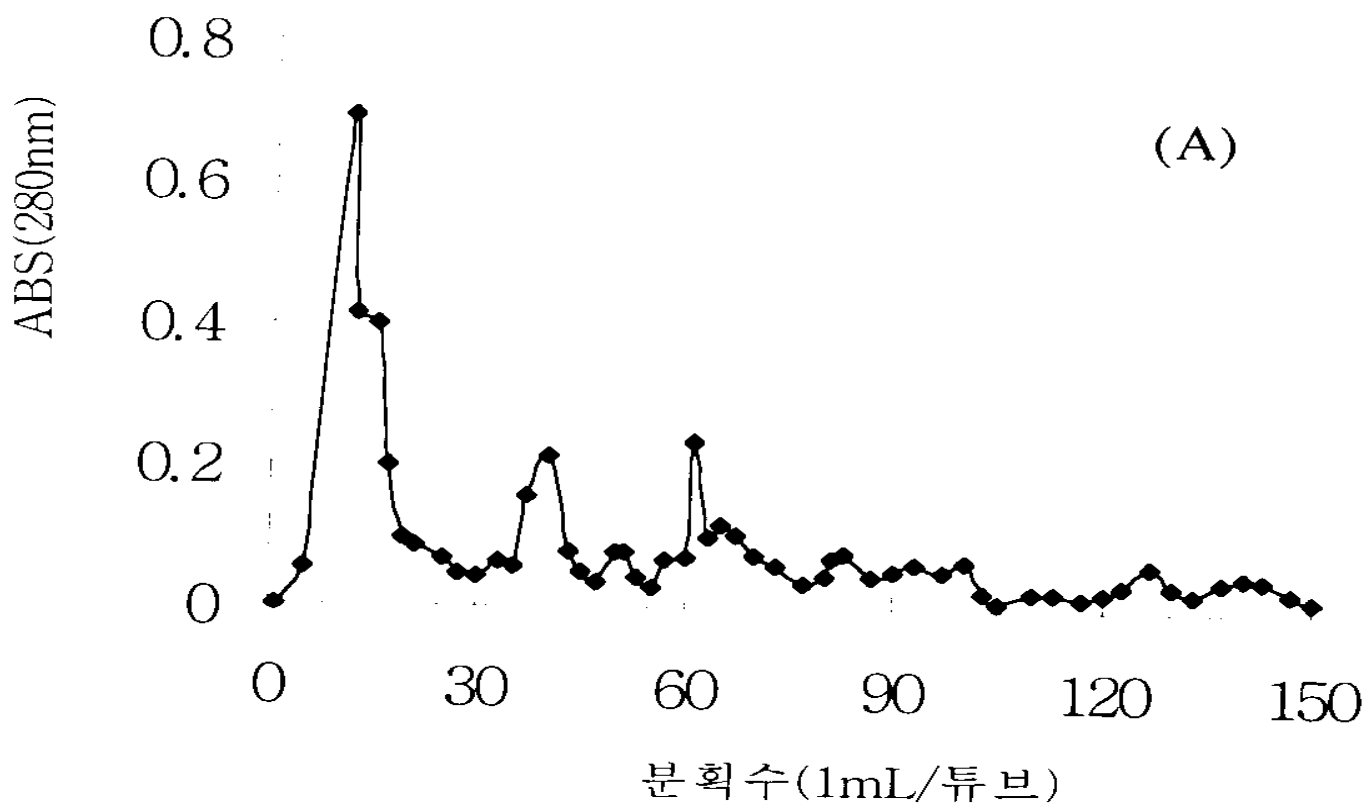
5



[보기] (A) : 아라키돈산 (1mM), (B) : ADP ($10\mu\text{M}$),
 (C) : 콜라겐 ($3\mu\text{g/mL}$), (D) : 트롬빈 (0.13units/mL)

◆ : *A. catechu*, ■ : 카테킨, ▲ : 녹차추출물, ● : 아스피린

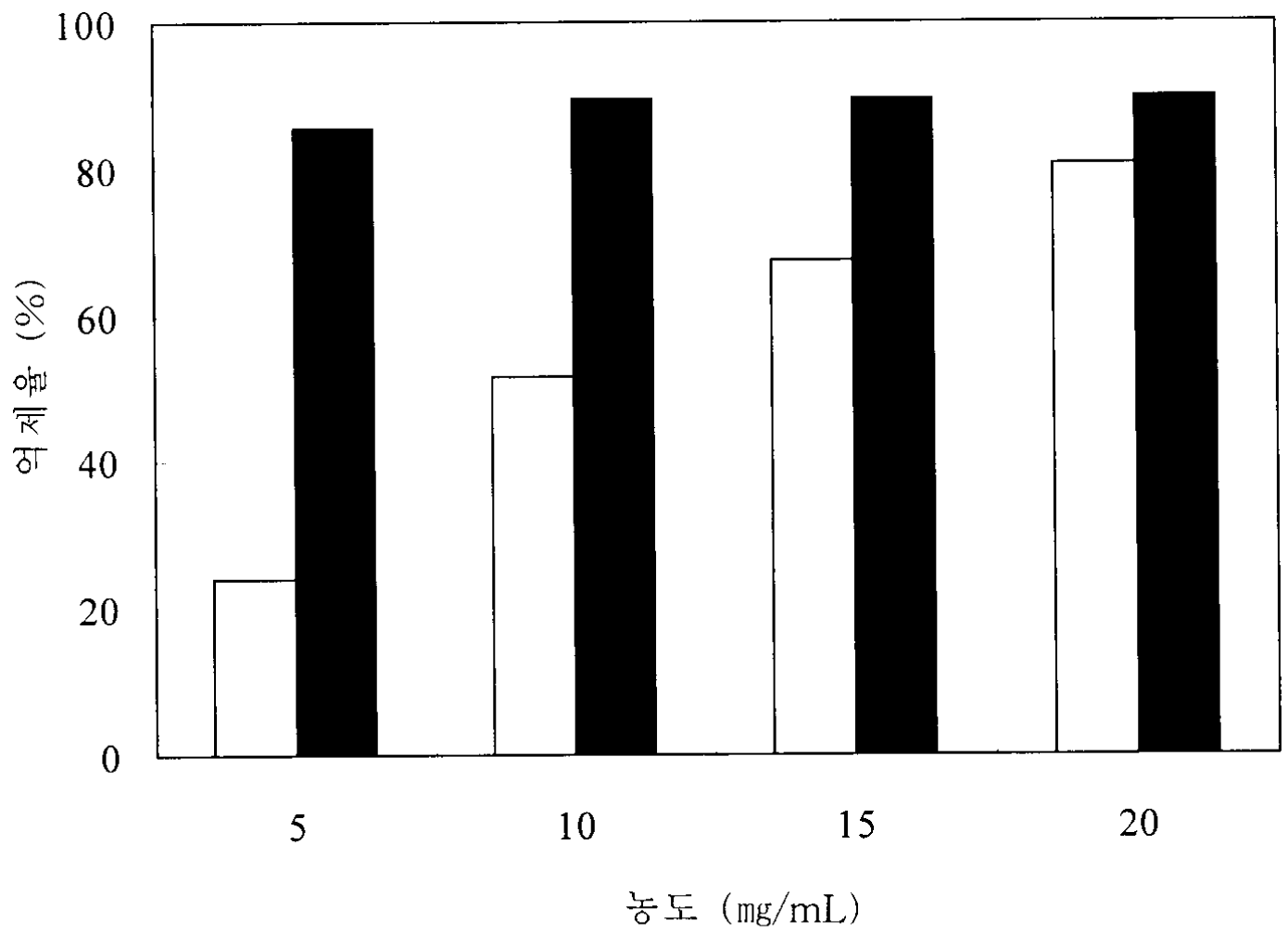
6



[보기] (A) : 95% 에탄올,

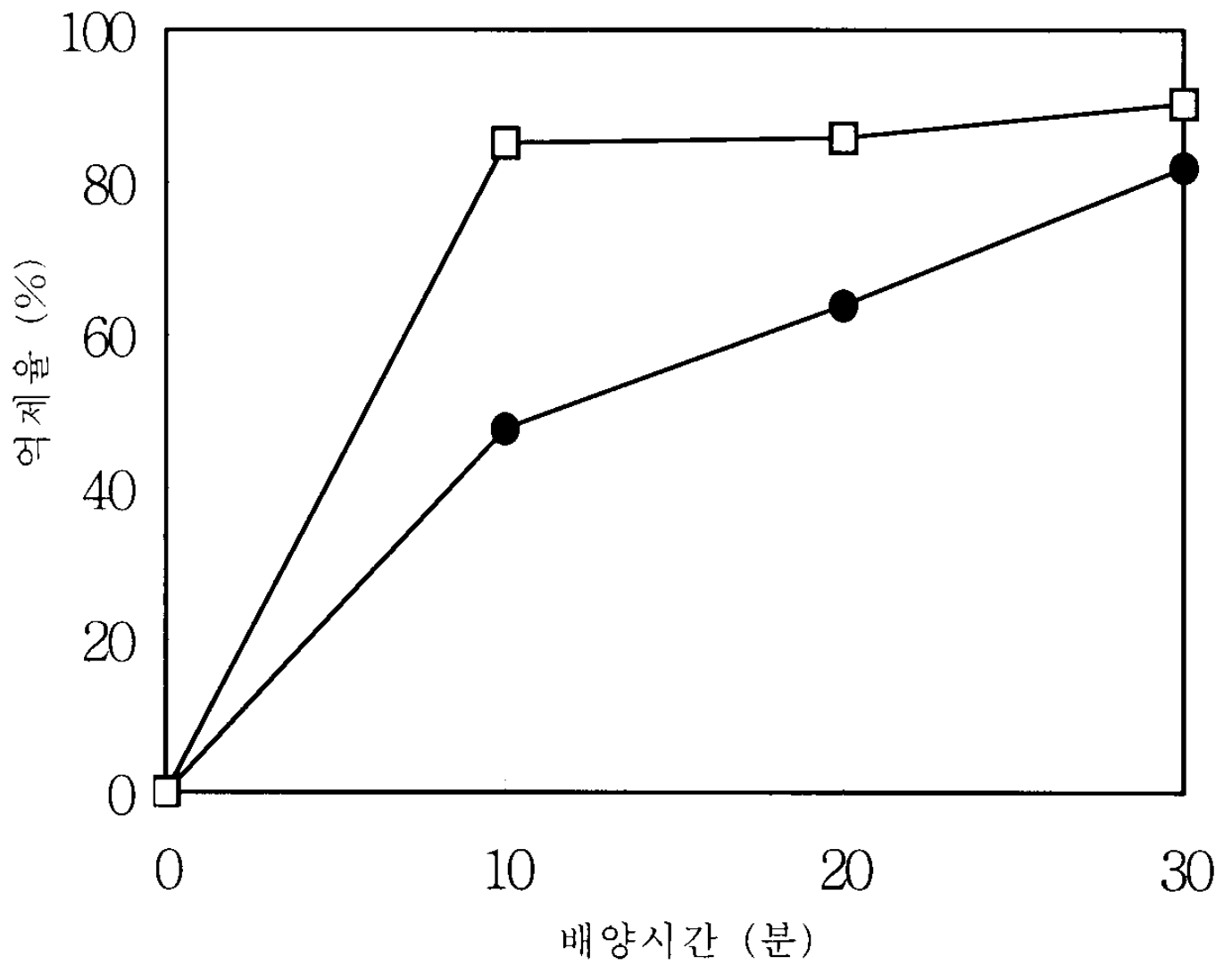
(B) : 50% 아세톤

7



[보기] □ : *A. catechu*, ■ : 아스피린

8



[보기] □ : 아스피린, ● : *A. catechu*